

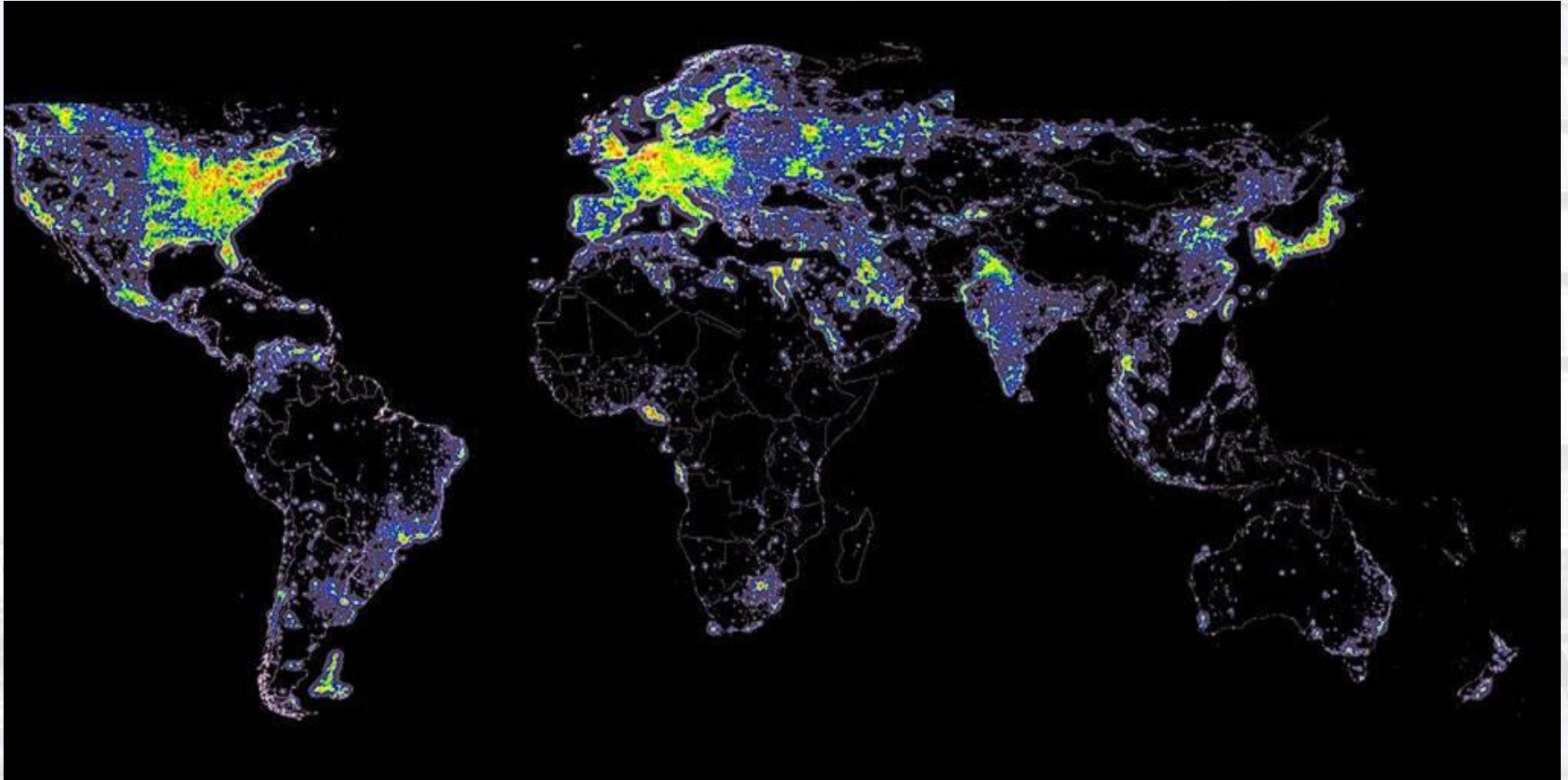
Low Carbon Vehicle Partnership Annual Conference 2014 – 15th July

A Tale of Two Cities - London

Murad Qureshi AM

Deputy Chair of the Environment Committee

Cities are responsible for 75 per cent of the world's emissions



Overview

The Environment Committee is currently examining the Mayor's progress in meeting his carbon reduction targets in the following areas:

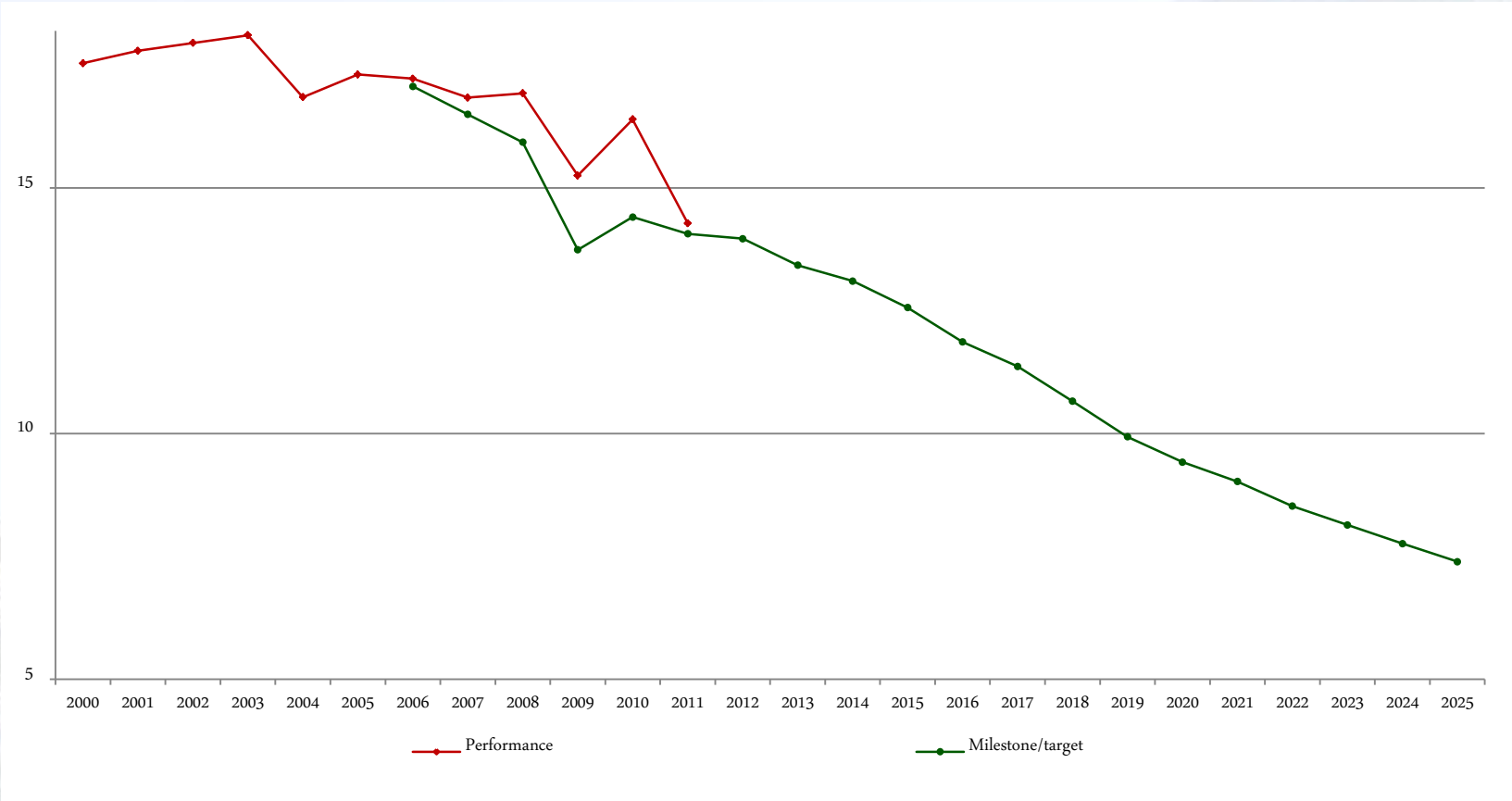
- Homes Retrofit
- Energy supply
- Workplace retrofit
- Economy
- Transport
- Building

Homes retrofit

- The Mayor has performed very poorly in retrofitting London homes and will miss his 2015 target.
- At the current rate the Mayor will also likely miss his 2025 target.
- London's domestic emissions actually rose 11% from 2011-2012
- It is concerning that too many of the retro-fits carried out are just for “easy measures” like draught excluders. Much more needs to be done on major measures like loft and cavity wall insulation.

Homes retrofit

Homes emissions (MtCO₂ per year)



Energy Supply

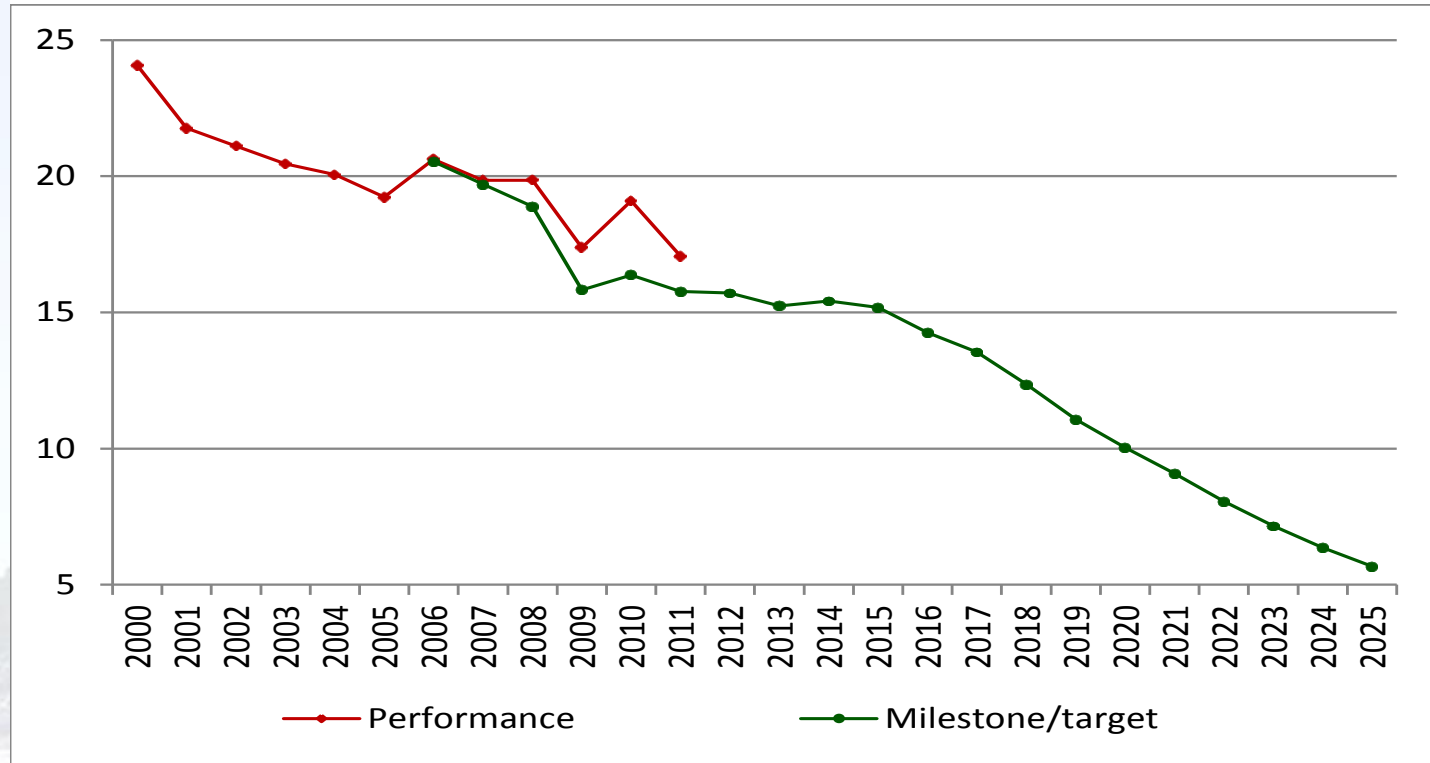
- The need to cut carbon and the upcoming capacity crunch make ensuring sustainable and affordable energy supplies more important than ever before.
- Decentralised Energy is crucial – but the Mayor will miss his milestone for DE generation for 2015
- Very little transparency on progress – very few reports from Mayor's DE Programme Delivery Unit.
- These are big projects and the Mayor needs to put more in the pipeline if he is to meet his DE targets

Workplace retrofit

- Progress very slow in tackling emissions
- In 2011 London's workplace emissions missed the milestone by a clear margin
- New figures show progress still not being made - industrial emissions rose by 11% from 2011-2012
- Important to work with London SMEs to cut carbon, target is to reach 25,000 by 2020, less than 200 involved in current pilot

Workplace retrofit

Chart 3: Workplaces emissions (MtCO₂ per year)



Source: CCMES (including roadmap and 2014 annual report), LEGGI

Economy

- Some good progress made in this area.
- The Mayor's Low Carbon Entrepreneur Prize is an example of good practice – getting future generations thinking about how to cut carbon.
- Low Carbon Sector is worth over £25 billion to London's economy.
- Mayor has been vocal in criticising wind farms – which is unhelpful to growing the industry.

Transport

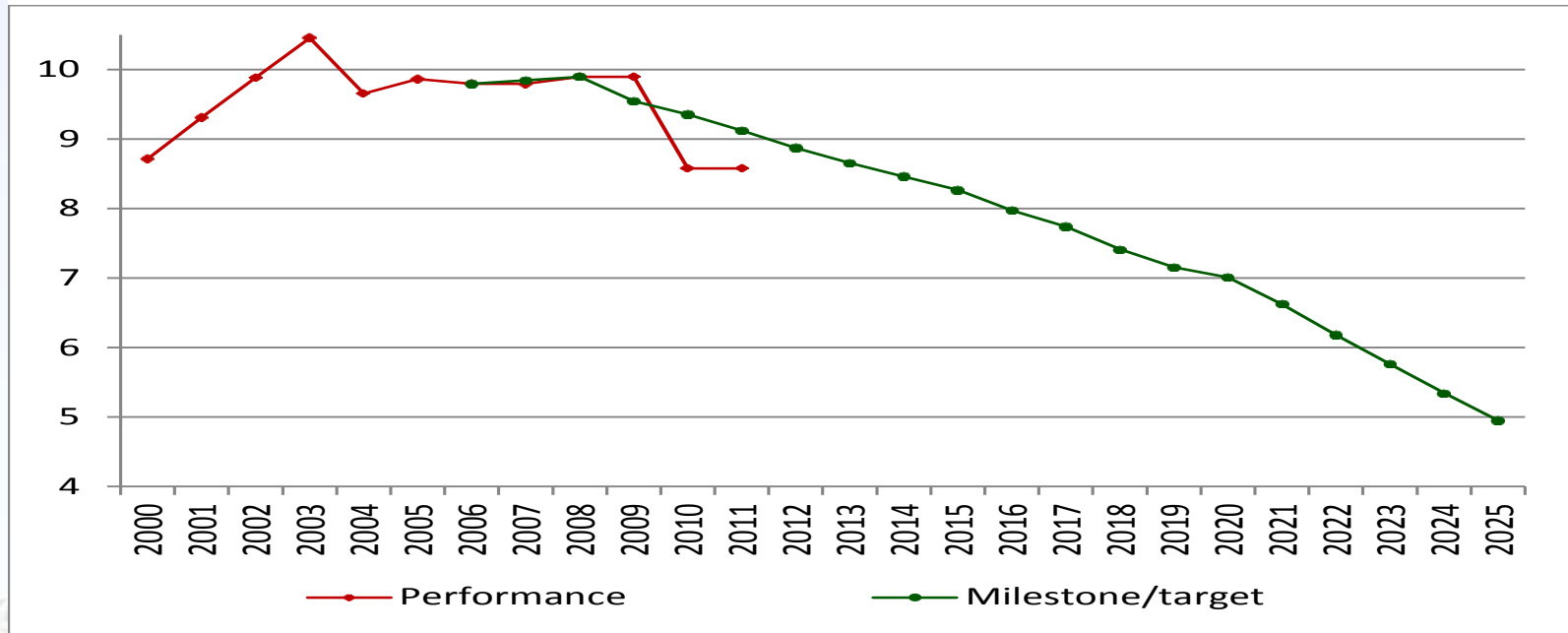
- Some good progress made but still a long way to go.
- Important to cut carbon in energy generation for Underground – why not use DE?
- Cutting transport emissions is an important part of tackling carbon emissions generally, they account for 22% of the total.
- Clear knock on benefits, if you reduce energy consumption of transport you also reduce running costs

Transport

- Transport emissions in 2010 were well ahead of the CCMES milestone and most of the 2015 milestone has been achieved already. If progress is maintained then the 2025 target should be within reach.
- Important to understand drivers of this progress – EU and National level, Mayoral programmes have less of a role.
- The milestones the Mayor has set for carbon reduction in transport are less ambitious and this should be taken into account when reviewing their success.

Transport

Chart 2: Transport emissions (MtCO₂ per year)



Source: CCMES (including roadmap and 2014 annual report); LEGGI1

1 Note that LEGGI data for transport emissions are annual for 2000 through 2006, but after that come out only in even-numbered years, so the data for 2007, 2009 and 2011 are simply repeats of the previous years.

Buildings

- Energy use in buildings makes up the bulk of London's carbon emissions
- Given the longevity of buildings it is very important that new buildings are built sustainably now as their carbon impact will be felt for many decades to come.
- Mayor's target is to make new buildings in London "zero carbon" by the end of this decade. The interim targets have been met but this progress must be maintained and accelerated.
- However, rates of house building remain low.

Overall Target

- It's a very mixed picture but in general many of the milestones towards a reduction in carbon emissions by 60% by 2025 are being missed.
- Given the latest evidence on climate change this is deeply troubling.
- As well as obligations to London, the Mayor must deliver on carbon reduction in order for the rest of the UK to achieve national and international carbon reduction targets.
- The current Mayor does not have long left in office, its vital these targets are on course when the next Mayor takes office.

Contact Details :

Murad Qureshi AM

City Hall

The Queen's Walk

London SE1 2AA

Tel No : 0207 983 4400

E-mail : murad.qureshi@london.gov.uk

Web site : www.muradqureshi.com